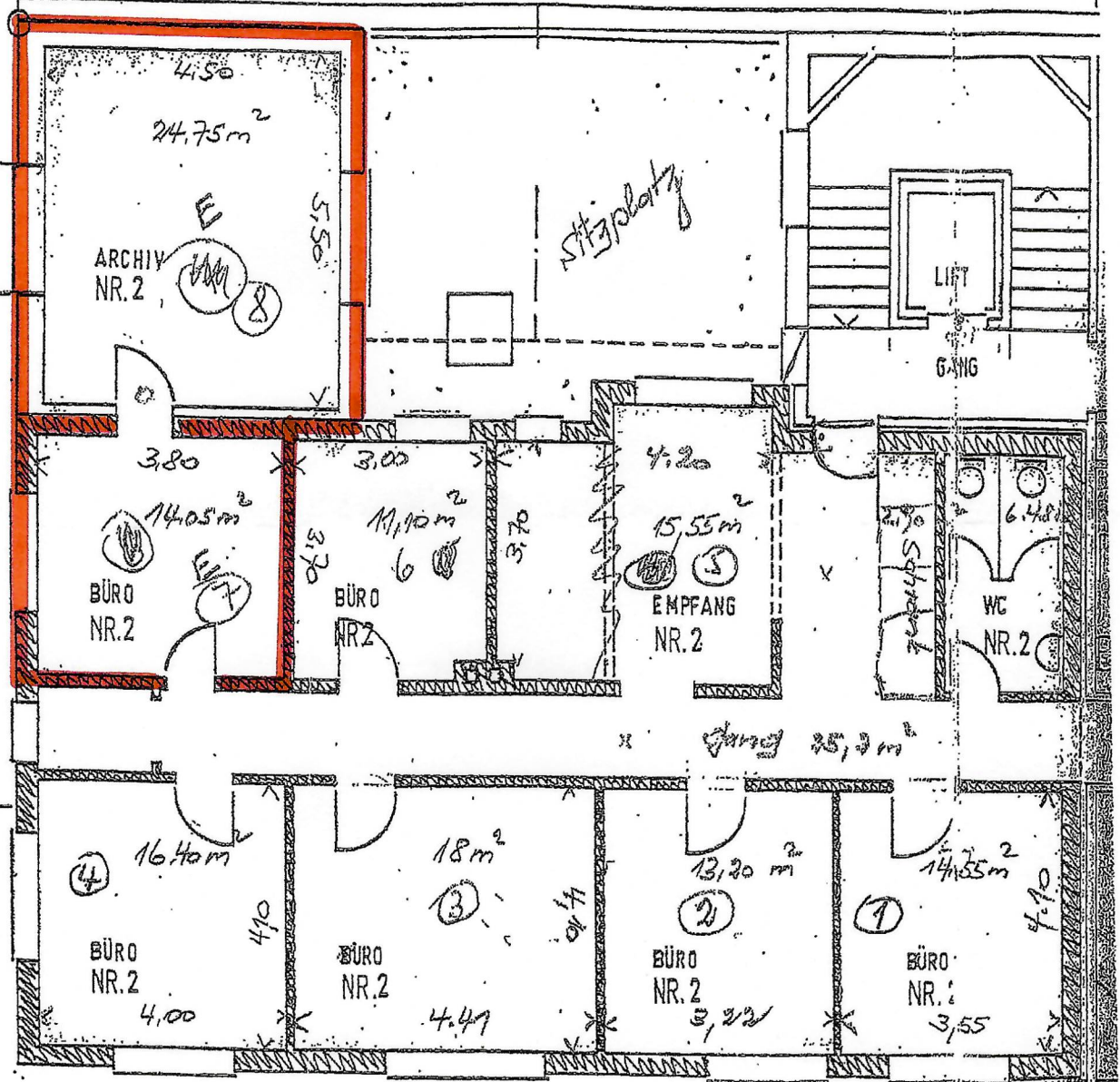


PARZ. NR. 1857

GRENZE



PARZ. NR. 1857

ALLG. NUTZUNG

STÜCKW. NR. 2: 170.25 m<sup>2</sup>

SCHNITT A

35

- 1) 45.75 m<sup>2</sup>
- 2) 89.85 m<sup>2</sup>
- 3) 34.58 m<sup>2</sup>

# 2. OBERGESCHOSS

MST. 1:100